



# EYE LASH

EYE LASH

EYE LASH

EYE LASH



EYE LASH

EYE LASH

EYE LASH



EYE LASH

EYE LASH



EYE LASH

EYE LA



SAILOR SOLDIER SURGICAL CORP. **SAILOR SOLDIER** Surgical Corporation  
 E-mail: sailorinstruments@gmail.com



fig-1 fig-5 fig-7a fig-7 fig-4

KI-001 KI-002 KI-003 KI-004 KI-005

- KI-001 STRAIGHT 11.5CM & 13CM
- KI-002 PRO STRAIGHT 11.5CM & 13CM
- KI-003 STRONG CURVED 11.5CM & 13CM
- KI-004 CURVED 115CM & 13CM ( SEMI )
- KI-005 STRAIGHT A 11.5CM & 13CM



KI-006 KI-007 KI-008 KI-009 KI-010

- KI-006 45 DEGREE 11.5CM & 13CM
- KI-007 15 DEGREE 11.5CM & 13CM
- KI-008 X TYPE 11.5CM & 13CM
- KI-009 X TYPE ANGLED 11.5CM & 13CM
- KI-010 HOOK TYPE 11.5CM & 13CM



APLICATORS



KI-011 KI-012 KI-013 KI-014 KI-015 KI-016 KI-017

- KI-011 CURVED (with straight tip) 11cm & 13cm
- KI-012 FINE HOOK TIP NO.6 11CM & 13CM
- KI-013 FINE HOOK TIP NO.6 11CM & 13CM
- KI-014 HOOK TWEEZER 11CM & 13CM
- KI-015 EYELASH ALICATOR 11CM & 13CM  
FALSE
- KI-016 EYELASH TWEEZER APLICATOR
- KI-017 EYELASH APLICATOR 11CM



**SAILOR SOLDIER**  
Surgical Componation

E-mail: sailorinstruments@gmail.com



KI-018 KI-019 KI-020 KI-021 KI-022 KI-023

- |        |               |                      |
|--------|---------------|----------------------|
| KI-018 | STRAIGHT      | 11.5CM & 13CM        |
| KI-019 | PRO STRAIGHT  | 11.5CM & 13CM        |
| KI-020 | STRONG CURVED | 11.5CM & 13CM        |
| KI-021 | CURVED        | 11.5CM & 13CM (SEMI) |
| KI-022 | STRAIGHT A    | 11.5CM & 13CM        |
| KI-023 | 45 DEGREE     | 11.5CM & 13CM        |



KI-024 KI-025 KI-026 KI-027 KI-028 KI-029

- |        |                    |                      |
|--------|--------------------|----------------------|
| KI-024 | 15 DEGREE          | 11.5CM & 13CM        |
| KI-025 | X TYPE             | 11.5CM & 13CM        |
| KI-026 | X TYPE ANGLED      | 11.5CM & 13CM        |
| KI-027 | FINE HOOK TIP NO.6 | 11CM & 13CM          |
| KI-028 | HOOK TWEEZER       | 11CM & 13CM          |
| KI-029 | EYELASH ALICATOR   | 11CM & 13CM<br>FALSE |



smart tweezers



KI-030 KI-031 KI-032 KI-033 KI-034 KI-035

- |        |               |                      |
|--------|---------------|----------------------|
| KI-030 | STRAIGHT      | 11.5CM & 13CM        |
| KI-031 | PRO STRAIGHT  | 11.5CM & 13CM        |
| KI-032 | STRONG CURVED | 11.5CM & 13CM        |
| KI-033 | CURVED        | 11.5CM & 13CM (SEMI) |
| KI-034 | 45 DEGREE     | 11.5CM & 13CM        |
| KI-035 | 15 DEGREE     | 11.5CM & 13CM        |



**SAILOR SOLDIER**  
Surgical Componation

E-mail: sailorinstruments@gmail.com



smart tweezers



KI-036 KI-037 KI-038 KI-039 KI-040 KI-041

- KI-036 45 DEGREE 11.5CM & 13CM
- KI-037 15 DEGREE 11.5CM & 13CM
- KI-038 STRAIGHT A 11.5CM & 13CM
- KI-039 X TYPE 11.5CM & 13CM
- KI-040 X TYPE ANGLED 11.5CM & 13CM
- KI-041 15 DEGREE 11.5CM & 13CM STRAIGHT

smart tweezers

GOLD COLOURED



KI-042 KI-043 KI-044 KI-045 KI-046



- KI-042 PRO STRAIGHT 11.5CM & 13CM
- KI-043 STRONG CURVED 11.5CM & 13CM
- KI-044 CURVED 115CM & 13CM ( SEMI )
- KI-045 PRO STRAIGHT 11.5CM & 13CM 45 angled
- KI-046 PRO STRAIGHT 11.5CM & 13CM 15 angled

smart tweezers

GOLD COLOURED



KI-047 KI-048 KI-049 KI-050 KI-051



- KI-047 15 DEGREE 11.5CM & 13CM
- KI-048 STRAIGHT A 11.5CM & 13CM
- KI-049 X TYPE 11.5CM & 13CM
- KI-050 X TYPE ANGLED 11.5CM & 13CM
- KI-051 15 DEGREE 11.5CM & 13CM STRAIGHT



**SAILOR SOLDIER**  
Surgical Corporation

E-mail: sailorinstruments@gmail.com



S type tweezers gold



KI-052 KI-053 KI-054 KI-055 KI-056 KI-057 KI-058

- KI-052 STRAIGHT 11.5CM & 13CM
- KI-053 PRO STRAIGHT 11.5CM & 13CM
- KI-054 STRONG CURVED 11.5CM & 13CM
- KI-055 CURVED 115CM & 13CM (SEMI)
- KI-056 STRAIGHT A 11.5CM & 13CM
- KI-057 45 DEGREE 11.5CM & 13CM
- KI-058 15 DEGREE 11.5CM & 13CM

S type tweezers gold



KI-059 KI-060 KI-061 KI-062 KI-063

- KI-059 X TYPE 11.5CM & 13CM
- KI-060 X TYPE ANGLED 11.5CM & 13CM
- KI-061 FINE HOOK TIP NO.6 11CM & 13CM
- KI-062 HOOK TWEEZER 11CM & 13CM
- KI-063 EYELASH ALICATOR 11CM & 13CM  
FALSE



S type tweezers multiple



KI-064 KI-065 KI-066 KI-067 KI-068 KI-069 KI-070

- KI-064 STRAIGHT 11.5CM & 13CM
- KI-065 PRO STRAIGHT 11.5CM & 13CM
- KI-066 STRONG CURVED 11.5CM & 13CM
- KI-067 CURVED 115CM & 13CM (SEMI)
- KI-068 STRAIGHT A 11.5CM & 13CM
- KI-069 45 DEGREE 11.5CM & 13CM
- KI-070 15 DEGREE 11.5CM & 13CM





**S type tweezers** MULTIPLE



- KI-071 X TYPE 11.5CM & 13CM
- KI-072 X TYPE ANGLED 11.5CM & 13CM
- KI-073 FINE HOOK TIP NO.6 11CM & 13CM
- KI-074 HOOK TWEEZER 11CM & 13CM
- KI-075 EYELASH ALICATOR 11CM & 13CM FALSE

KI-071 KI-072 KI-073 KI-074 KI-075

**DOLLS TWEEZERS**



- KI-076 PRO STRAIGHT 11.5CM & 13CM
- KI-077 15 DEGREE 11.5CM & 13CM
- KI-078 45 DEGREE 11.5CM & 13CM STRAIGHT A
- KI-079 15 DEGREE 11.5CM & 13CM STRAIGHT A
- KI-080 STRAIGHT 11.5CM & 13CM
- KI-081 STRAIGHT A 11.5CM & 13CM
- KI-082 CURVED (with straight tip) 11cm & 13cm
- KI-083 HOOK TYPE 11.5CM & 13CM
- KI-084 CURVED 115CM & 13CM ( SEMI )

KI-076 KI-077 KI-078 KI-079 KI-080 KI-081 KI-082 KI-083 KI-084

**HOOK TYPE TWEEZERS XD LASHES**



These high precision pointed tweezers spread the natural lashes making it easier to separate and isolate the desired lash for application. Because of the fine pointed tips makes it easier to maneuver into any direction or angle. Light weight so does not cause hand fatigue

A short angled precision tip but with a large gripping area to avoid damage to fine gauge lashes. These are great isolation tweezers but are sometimes used inverted as pickup tweezers.

KI-085 KI-086 KI-087 KI-088 KI-089 KI-090 KI-091 KI-092 KI-093



**HOOK TYPE TWEEZERS XD LASHES**



KI-094 KI-095 KI-096 KI-097 KI-098 KI-099 KI-100 KI-101 KI-102 KI-103

These high precision pointed tweezers spread the natural lashes making it easier to separate and isolate the desired lash for application. Because of the fine pointed tips makes it easier to maneuver into any direction or angle. Light weight so does not cause hand fatigue

A short angled precision tip but with a large gripping area to avoid damage to fine gauge lashes. These are great isolation tweezers but are sometimes used inverted as pickup tweezers.

*Eyelash Extension Strong Curved Tweezers for 3D 6D Volume Lashes*



KI-104 KI-105 KI-106 KI-107 KI-108 KI-109 KI-110 KI-111 KI-112 KI-113



*Eyelash Extension Strong Curved Tweezers for 3D 6D Volume Lashes*

These tweezers are designed for the specialized technique of applying 3D Volume lashes. The special tips grab and hold lashes with a super grip of the delicate fans you create

*curved with str tip*



KI-114 KI-115 KI-116 KI-117 KI-118 KI-119 KI-120 KI-121 KI-122 KI-123



Our high precision pointed tweezers spread the natural lashes making it easier to separate and isolate the desired lash for application.

Because of the slightly curved head it's easy to maneuver into any direction or angle.

Light weight so does not cause hand fatigue

Our eyelash extension tweezers additionally have been designed with maximal surface area on the contact end, for ease of use when gripping and holding eyelash extensions



**SAILOR SOLDIER**  
Surgical Corporation

E-mail: sailorinstruments@gmail.com



straight A type



KI-124 KI-125 KI-126 KI-127 KI-128 KI-129 KI-130 KI-131 KI-132 KI-133

Stainless steel, 130 mm, A type. If you are right handed, this tweezers should be placed in your left hand to isolate one individual eyelash. Tweezers are required for the application of lash extensions. One pair is used consistently throughout the procedure to isolate one individual lash, the other pair is used to apply the semi permanent lash extension.

These high precision pointed tweezers spread the natural lashes making it easier to separate and isolate the desired lash for application

Light weight so does not cause hand fatigue.

A type tweezers angled 45



KI-134 KI-135 KI-136 KI-137 KI-138 KI-139 KI-140 KI-141 KI-142 KI-143

*Eyelash Extension A-Type Tweezers Fine Tips*

These high precision pointed tweezers spread the natural lashes making it easier to separate and isolate the desired lash for application.

Light weight so does not cause hand fatigue.

Our eyelash extension tweezers additionally have been designed with maximal surface area on the contact end, for ease of use when gripping and holding eyelash extensions.



A TYPE TWEEZERS ANGLED 15



KI-144 KI-145 KI-146 KI-147 KI-148 KI-149 KI-150 KI-151 KI-152 KI-153

*Eyelash Extension A-Type Tweezers Fine Tips*

These high precision pointed tweezers spread the natural lashes making it easier to separate and isolate the desired lash for application.

Light weight so does not cause hand fatigue.

Our eyelash extension tweezers additionally have been designed with maximal surface area on the contact end, for ease of use when gripping and holding eyelash extensions.



**SAILOR SOLDIER**  
Surgical Corporation

E-mail: sailorinstruments@gmail.com





pro straight tweezer



KI-154 KI-155 KI-156 KI-157 KI-158 KI-159 KI-160 KI-161 KI-162 KI-163

Tweezer 002 was designed for eyelash extensions. This straight tweezer is used for picking up and placing an eyelash. This is made of premium quality stainless steel. Precision calibrated tips with good grip to pick up and place down eyelash extensions with ease. Achieve exact placement of lashes with this precise Tweezers.

Featuring a super-fine tip for ultimate precision, and one tapered side for easy maneuvering and wrist comfort. The soft spring is designed to reduce hand fatigue. Non-magnetic, Non-static, Autoclavable, Super-fine tip, Stainless Steel



strong curved



KI-164 KI-165 KI-166 KI-167 KI-168 KI-169 KI-170 KI-171 KI-172 KI-173

These high precision pointed tweezers spread the natural lashes making it easier to separate and isolate the desired lash for application. Because of the fine pointed tips makes it easier to maneuver into any direction or angle. Light weight so does not cause hand fatigue

Curved tweezers are designed to provide good accessibility to the isolated eyelash extension.

All of our eyelash extension tweezers have been engineered to have a light 'action', specifically designed to prevent repetitive strain injury from use in the eyelash extension technician's forefinger and thumb



semi-curved



KI-174 KI-175 KI-176 KI-177 KI-178 KI-179 KI-180 KI-181 KI-182 KI-183

Our high precision pointed tweezer spreads the natural lashes making it easier to separate and isolate the desired lash for application.

Because of the slightly curved head it's easy to maneuver into any direction or angle.

Light weight so does not cause hand fatigue

Our eyelash extension tweezers additionally have been designed with maximal surface area on the contact end, for ease of use when gripping and holding eyelash extensions



**SAILOR SOLDIER**  
Surgical Corporation

E-mail: sailorinstruments@gmail.com



x-type tweezers



X-type Stainless steel, 130 mm  
 This X-type tweezers has reversed forceps. It's specially designed for grabbing items without having to manually grip it together. This type of tweezers will automatically hold the lash extension until you press to release. It works the opposite way from normal tweezers and is used to pick up and place the lash extensions. There is a method that you can use many pairs of X-types with the lash extensions already held in place prior to your client arriving

KI-184 KI-185 KI-186 KI-187 KI-188 KI-189 KI-190 KI-191 KI-192 KI-193

x-type tweezers angled



X-type Stainless steel, 130 mm  
 This X-type tweezers has reversed forceps. It's specially designed for grabbing items without having to manually grip it together. This type of tweezers will automatically hold the lash extension until you press to release. It works the opposite way from normal tweezers and is used to pick up and place the lash extensions. There is a method that you can use many pairs of X-types with the lash extensions already held in place prior to your client arriving



KI-194 KI-195 KI-196 KI-197 KI-198 KI-199 KI-200 KI-201 KI-202 KI-203

Tweezers - xD Pickup



Angled precision chisel tip is perfect for picking up and fanning ultra-fine gauge lashes (0.06mm, 0.07mm) without damaging them. These are similar to the Eyelash Addict volume tweezers but have a more angled tip so that you can see the glue bond more easily. If you use straight tweezers for pick-up, once you get used to these tweezers you will find it difficult to work without them on ultra fine lashes. The groove in the neck of these tweezers allows them to close flat at the tip without putting too much pressure on the lash



KI-204 KI-205 KI-206 KI-207 KI-208 KI-209 KI-210 KI-211 KI-212



**SAILOR SOLDIER**  
 Surgical Componation

E-mail: sailorinstruments@gmail.com



**EYELASH APLICATOR TWEEZERS**



KI-203 KI-204 KI-205 KI-206 KI-207 KI-208 KI-209 KI-210 KI-211 KI-212

**What it is:**  
A convenient tool that makes applying false lashes easy and precise.

**What it does:**  
Apply your favorite false lashes in a snap with this innovative tool, perfect for both the novice lash wearer and the aficionado. The rubber-coated grips offer superior hold and control as you place the lash on your lid and the ergonomic design fits comfortably in your hand.

**Suggested Usage:**  
-Place lash in the head of the tool and gently squeeze closed.  
-Tilt chin slightly up to gain easier access to the lash line.  
-Place the lashes on and release grip.  
-Use the back end of the tool to tuck it securely into the lash line.



**EYELASH APLICATOR TWEEZERS**



KI-213 KI-214 KI-215 KI-216 KI-217 KI-218 KI-219 KI-220 KI-221 KI-222

Apply your favorite false lashes in a snap with this innovative tool, perfect for both the novice lash wearer and the aficionado. The stainless steel essential features a curved tip that expertly holds lashes in place, so you get less fuss and more fringe.

Professional Tweezers To Wear False Eyelashes  
Made Of Stainless Steel  
Large Flat Bevel Design



**EYELASH APLICATOR TWEEZERS**



KI-223 KI-224 KI-225 KI-226 KI-227 KI-228 KI-229 KI-230 KI-231 KI-232

**professional lash applicator tool  
with curved tip precise  
placement and application**



**SAILOR SOLDIER**  
Surgical Corporation

E-mail: sailorinstruments@gmail.com



Designed for precision and comfort, SugarLash™ PrecisionTweezers are your best choice for high quality, high precision stainless steel tweezers specially designed for Professional Lash Stylists



KI-223                      KI-224                      KI-225

- KI-223    **EYELASH TWEEZER FIG 5 ANGLED 45'**
- KI-224    **EYELASH TWEEZER FIG 5 ANGLED 15'**
- KI-225    **EYELASH TWEEZER FIG-2 ANGLED**



pro  
straight

KI-226    KI-227    KI-228    KI-229

Stainless steel, 130 mm, A type. If you are right handed, this tweezers should be placed in your left hand to isolate one individual eyelash. Tweezers are required for the application of lash extensions. One pair is used consistently throughout the procedure to isolate one individual lash, the other pair is used to apply the semi permanent lash extension.

**These high precision pointed tweezers spread the natural lashes making it easier to separate and isolate the desired lash for application**

**Light weight so does not cause hand fatigue.**



x  
type

KI-230    KI-231    KI-232    KI-233

X-type Stainless steel, 130 mm

This X-type tweezers has reversed forceps. It's specially designed for grabbing items without having to manually grip it together. This type of tweezers will automatically hold the lash extension until you press to release. It works the opposite way from normal tweezers and is used to pick up and place the lash extensions.

There is a method that you can use many pairs of X-types with the lash extensions already held in place prior to your client arriving



semi  
curved

KI-234    KI-235    KI-236    KI-237

Our high precision pointed tweezers spreads the natural lashes making it easier to separate and isolate the desired lash for application.

Because of the slightly curved head it's easy to maneuver into any direction or angle.

Light weight so does not cause hand fatigue

Our eyelash extension tweezers additionally have been designed with maximal surface area on the contact end, for ease of use when gripping and holding eyelash extensions



pro  
straight

Stainless steel, 130 mm, A type. If you are right handed, this tweezers should be placed in your left hand to isolate one individual eyelash. Tweezers are required for the application of lash extensions. One pair is used consistently throughout the procedure to isolate one individual lash, the other pair is used to apply the semi permanent lash extension.

**These high precision pointed tweezers spread the natural lashes making it easier to separate and isolate the desired lash for application**

Light weight so does not cause hand fatigue.

KI-238 KI-239 KI-240 KI-241



straight

Tweezer 001 was designed for eyelash extensions. This straight tweezers is used for picking up and placing an eyelash. This is made of premium quality stainless steel. Precision calibrated tips with good grip to pick up and place down eyelash extensions with ease. Achieve exact placement of lashes with this precise Tweezers.

Featuring a super-fine tip for ultimate precision, and equal taper on both sides for ease of use. The soft spring is designed to reduce hand fatigue. Non-magnetic, Non-static, Autoclavable, Super-fine tip, Stainless Steel.

KI-242 KI-243 KI-244 KI-245



straight

Tweezer 001 was designed for eyelash extensions. This straight tweezers is used for picking up and placing an eyelash. This is made of premium quality stainless steel. Precision calibrated tips with good grip to pick up and place down eyelash extensions with ease. Achieve exact placement of lashes with this precise Tweezers.

Featuring a super-fine tip for ultimate precision, and equal taper on both sides for ease of use. The soft spring is designed to reduce hand fatigue. Non-magnetic, Non-static, Autoclavable, Super-fine tip, Stainless Steel.

KI-246 KI-247 KI-248 KI-249



**SAILOR SOLDIER**  
Surgical Corporation

E-mail: sailorinstruments@gmail.com



**STRAIGHT A**



Stainless steel, 130 mm, A type. If you are right handed, this tweezers should be placed in your left hand to isolate one individual eyelash. Tweezers are required for the application of lash extensions. One pair is used consistently throughout the procedure to isolate one individual lash, the other pair is used to apply the semi permanent lash extension.

**These high precision pointed tweezers spread the natural lashes making it easier to separate and isolate the desired lash for application**

Light weight so does not cause hand fatigue.

KI-250 KI-251 KI-253 KI-254

**STRAIGHT TWEEZERS**



Tweezer 001 was designed for eyelash extensions. This straight tweezer is used for picking up and placing an eyelash. This is made of premium quality stainless steel. Precision calibrated tips with good grip to pick up and place down eyelash extensions with ease. Achieve exact placement of lashes with this precise Tweezers,

Featuring a super-fine tip for ultimate precision, and equal taper on both sides for ease of use. The soft spring is designed to reduce hand fatigue. Non-magnetic, Non-static, Autoclavable, Super-fine tip. Stainless Steel.

KI-255 KI-256 KI-257 KI-258

**slim tweezers**



- KI-259 Straight tweezer fine
- KI-260 Pro straight tweezer fine
- KI-260a Semi curved tweezer fine
- KI-261 Pro straight but angled 45 fine
- KI-262 Straight A tweezer fine
- KI-263 X-Type tweezer fine

KI-259 KI-260 KI-260 KI-261 KI-262 KI-263



**slim tweezers**



gold coated

- KI-264 Straight tweezer fine
- KI-265 Pro straight tweezer fine
- KI-266 Semi curved tweezer fine
- KI-267 Pro straight but angled 45 fine
- KI-268 Straight A tweezer fine
- KI-269 X-Type tweezer fine

KI-264 KI-265 KI-266 KI-267 KI-268 KI-269

**straight tweezers**



Tweezer 001 was designed for eyelash extensions. This straight tweezer is used for picking up and placing an eyelash. This is made of premium quality stainless steel. Precision calibrated tips with good grip to pick up and place down eyelash extensions with ease. Achieve exact placement of lashes with this precise Tweezers.,

Featuring a super-fine tip for ultimate precision, and equal taper on both sides for ease of use. The soft spring is designed to reduce hand fatigue. Non-magnetic, Non-static, Autoclavable. Super-fine tip, Stainless Steel.

KI-270 KI-271 KI-272 KI-273 KI-274 KI-275 KI-276 KI-277 KI-278

**straight tweezers**



Tweezer 001 was designed for eyelash extensions. This straight tweezer is used for picking up and placing an eyelash. This is made of premium quality stainless steel. Precision calibrated tips with good grip to pick up and place down eyelash extensions with ease. Achieve exact placement of lashes with this precise Tweezers.,

Featuring a super-fine tip for ultimate precision, and equal taper on both sides for ease of use. The soft spring is designed to reduce hand fatigue. Non-magnetic, Non-static, Autoclavable. Super-fine tip, Stainless Steel.

KI-279 KI-280 KI-281 KI-282 KI-283 KI-284 KI-285 KI-286 KI-287 KI-288





eyelash tweezer straight



KI-289 KI-290 KI-291 KI-292 KI-293 KI-294 KI-295 KI-296 KI-297

Tweezer 001 was designed for eyelash extensions. This straight tweezer is used for picking up and placing an eyelash. This is made of premium quality stainless steel. Precision calibrated tips with good grip to pick up and place down eyelash extensions with ease. Achieve exact placement of lashes with this precise Tweezers.

Featuring a super-fine tip for ultimate precision, and equal taper on both sides for ease of use. The soft spring is designed to reduce hand fatigue. Non-magnetic, Non-static, Autoclavable, Super-fine tip, Stainless Steel.



eyelash tweezer straight



KI-298 KI-299 KI-300 KI-301 KI-302 KI-303 KI-304 KI-305 KI-306

Tweezer 001 was designed for eyelash extensions. This straight tweezer is used for picking up and placing an eyelash. This is made of premium quality stainless steel. Precision calibrated tips with good grip to pick up and place down eyelash extensions with ease. Achieve exact placement of lashes with this precise Tweezers.

Featuring a super-fine tip for ultimate precision, and equal taper on both sides for ease of use. The soft spring is designed to reduce hand fatigue. Non-magnetic, Non-static, Autoclavable, Super-fine tip, Stainless Steel.



eyelash tweezer straight



KI-307 KI-308 KI-309 KI-310 KI-311 KI-312 KI-313 KI-314 KI-315

Tweezer 001 was designed for eyelash extensions. This straight tweezer is used for picking up and placing an eyelash. This is made of premium quality stainless steel. Precision calibrated tips with good grip to pick up and place down eyelash extensions with ease. Achieve exact placement of lashes with this precise Tweezers.

Featuring a super-fine tip for ultimate precision, and equal taper on both sides for ease of use. The soft spring is designed to reduce hand fatigue. Non-magnetic, Non-static, Autoclavable, Super-fine tip, Stainless Steel.



**SAILOR SOLDIER**  
Surgical Corporation

E-mail: sailorinstruments@gmail.com





Scissors - Narrow Curved Utility



KI-316      KI-317      KI-318

SCISSORS FOR EYELASH EXTENSIONS



KI-319      KI-320      KI-321

SCISSORS FOR EYELASH EXTENSIONS



KI-322      KI-323      KI-324      KI-325      KI-326

**KI-316** Scissors - Narrow Curved Utility

**KI-317** These gently curved, high quality, stainless-steel scissors are ideal for trimming strip-lashes or cutting down extensions to customise your client's look.

**KI-318** Sharp scissors to cut the surgical tape



**KI-319** Sharp scissors to cut the surgical tape

**KI-320** Sharp scissors to cut the surgical tape

**KI-321** Sharp scissors to cut the surgical tape

For use in cutting medical tape to size for clients. For use in trimming lashes for a customized upper and lower lash design



**KI-322** micro eyelash scissors

**KI-323** These perfectly crafted, straight blade scissors, are designed for precise trimming along the upper edge of the eyebrow to give the perfect elegant upper brow shape

**KI-324** Round Pointed Eyebrow Eyelash Safety Scissors Trimmer Tips

**KI-325** These perfectly crafted, straight blade scissors, are designed for precise trimming along the upper edge of the eyebrow to give the perfect elegant upper brow shape

**KI-326** Sharp scissors to cut the surgical tape



SCISSORS FOR EYELASH EXTENSIONS

gold shank



KI-327a      KI-328a      KI-329a

- KI-327a      Sharp scissors to cut the surgical tape
- KI-328a      Sharp scissors to cut the surgical tape
- KI-329a      Sharp scissors to cut the surgical tape



SCISSORS FOR EYELASH EXTENSIONS

gold shank



KI-327      KI-328      KI-329

- KI-327      Scissors - Narrow Curved Utility

KI-328      These gently curved, high quality, stainless-steel scissors are ideal for trimming strip-lashes or cutting down extensions to customise your client's look.

- KI-329      Sharp scissors to cut the surgical tape



SCISSORS FOR EYELASH EXTENSIONS

gold shank



KI-330      KI-331      KI-332      KI-333      KI-334      KI-335

- KI-330      Sharp scissors to cut the surgical tape

KI-331      These perfectly crafted, straight blade scissors, are designed for precise trimming along the upper edge of the eyebrow to give the perfect elegant upper brow shape

- KI-332      Round Pointed Eyebrow Eyelash Safety Scissors Trimmer Tips

KI-333      These perfectly crafted, straight blade scissors, are designed for precise trimming along the upper edge of the eyebrow to give the perfect elegant upper brow shape

- KI-334      micro eyelash scissors

- KI-335      micro eyelash scissors



**SAILOR SOLDIER**  
Surgical Corporation

E-mail: sailorinstruments@gmail.com



SCISSORS FOR EYELASH EXTENSIONS

gold shank

For use in cutting medical tape to size for clients. For use in trimming lashes for a customized upper and lower lash design



- KI-336** Sharp scissors to cut the surgical tape
- KI-337** Sharp scissors to cut the surgical tape
- KI-338** Eyelash scissors

KI-336      KI-337      KI-338

SCISSORS FOR EYELASH EXTENSIONS

gold shank



- KI-339** Sharp scissors to cut the surgical tape
- KI-340** Eyelash scissors
- KI-341** Scissors - Narrow Curved Utility

KI-339      KI-340      KI-341

SCISSORS FOR EYELASH EXTENSIONS

multiple



- KI-342** eyelash trimming scissor
- KI-343** Sharp scissors to cut the surgical tape
- KI-344** Eyelash scissors
- KI-345** Sharp scissors to cut the surgical tape
- KI-346** Eyelash scissors
- KI-347** Scissors - Narrow Curved Utility
- KI-348** Eyelash scissors

KI-342      KI-343      KI-344      KI-345      KI-346      KI-347      KI-348



**SAILOR SOLDIER**  
Surgical Corporation

E-mail: sailorinstruments@gmail.com



SCISSORS FOR EYELASH EXTENSIONS

For use in cutting medical tape to size for clients. For use in trimming lashes for a customized upper and lower lash design



KI-349

KI-350

KI-351

- KI-349 eyelash trimming scissors
- KI-350 Sharp scissors to cut the surgical tape
- KI-351 Sharp scissors to cut the surgical tape



SCISSORS FOR EYELASH EXTENSIONS

For use in cutting medical tape to size for clients. For use in trimming lashes for a customized upper and lower lash design



KI-352

KI-353

KI-354

- KI-352 Sharp scissors to cut the surgical tape
- KI-353 eyelash trimming scissors
- KI-354 Sharp scissors to cut the surgical tape



SCISSORS FOR EYELASH EXTENSIONS

For use in cutting medical tape to size for clients. For use in trimming lashes for a customized upper and lower lash design



KI-355

KI-356

KI-357

KI-358

- KI-355 eyelash trimming scissors
- KI-356 Scissors - Narrow Curved Utility
- KI-357 eyelash trimming scissors
- KI-358 eyelash trimming scissors



**SAILOR SOLDIER**  
Surgical Corporation

E-mail: sailorinstruments@gmail.com



SCISSORS FOR EYELASH EXTENSIONS

For use in cutting medical tape to size for clients. For use in trimming lashes for a customized upper and lower lash design



KI-359

KI-360

KI-361

**KI-359** Sharp scissors to cut the surgical tape

**KI-360** Sharp scissors to cut the surgical tape

**KI-361** straight blade trimming scissors

SCISSORS FOR EYELASH EXTENSIONS

For use in cutting medical tape to size for clients. For use in trimming lashes for a customized upper and lower lash design



KI-362

KI-363

KI-364



**KI-362** Sharp scissors to cut the surgical tape

**KI-363** straight blade trimming scissors

**KI-364** eyelash trimming scissors

SCISSORS FOR EYELASH EXTENSIONS

For use in cutting medical tape to size for clients. For use in trimming lashes for a customized upper and lower lash design



KI-365

KI-366

KI-367

KI-368



**KI-365** eyelash trimming scissors

**KI-366** Scissors - Narrow Curved Utility

**KI-367** Sharp scissors to cut the surgical tape

**KI-368** eyelash scissors fine



**SAILOR SOLDIER**  
Surgical Corporation

E-mail: sailorinstruments@gmail.com



**SCISSORS FOR EYELASH EXTENSIONS**

For use in cutting medical tape to size for clients. For use in trimming lashes for a customized upper and lower lash design



**KI-369**

**KI-370**

**KI-369**      **eyelash scissors fine**

**KI-370**      **eyelash scissors fine**



Precisely place strip or individual lashes with this applicator so clients can flirtatiously and stylishly bat their lashes at Cupid.



**KI-371**

**KI-372**

**KI-371** Professional Double Sided Eyelash Applicator, 5 Inch

- Precision pointed tips for applying single lashes
- Crescent shaped tips for applying strip lashes

**KI-372**      **EYELASH PLICATOR TWEEZERS**

- Apply Para Eyelashes With Ease
- Pointed End Will Pick Up the Finest Lashes
- Curved End for Applying Lashes
- Stainless Steel



**SPATULA WITH SPOON**



**KI-373**

**KI-374**

**KI-373**      **SPATULAS**      **medium**

**KI-374**      **SPATULAS**      **flat handle**

**KI-375**      **SPATULAS**      **with spoon**

**KI-376**      **SPATULAS**

**KI-377**      **SPATULAS**      **large**

This handy dispensing tool is made from stainless steel to prevent contamination. Get every last drop out of your pricey creams. Don't dip your fingers in your beauty products.

Quickly and cleanly move cosmetics from container to mixing surface. Edge is ideal for scraping creams, mousse, concealers and more... while spoon easily scoops loose powders.



**KI-375**

**KI-376**

**KI-377**

eyelash tweezer set

a



KI-375

b



KI-376

c



KI-377 a

d



KI-378 a

e



KI-379 a

f



KI-380

g



KI-381

h



KI-382

i



KI-383

j



KI-384

k



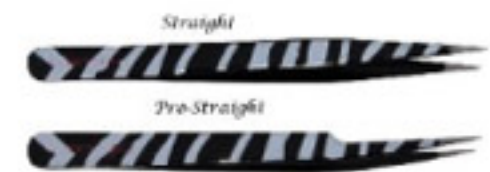
KI-385

l



KI-386

m



KI-387



**SAILOR SOLDIER**  
Surgical Componation

E-mail: sailorinstruments@gmail.com



**SAILOR SOLDIER**  
Surgical Corporation

E-mail: sailorinstruments@gmail.com



A



KI-396

B



KI-397

C



KI-398

D



KI-399

E



KI-400

F



KI-401

G



KI-402

H



KI-403



SAILOR SOLDIER  
SURGICAL CORP.

**SAILOR SOLDIER**  
*Surgical Corporation*

E-mail: sailorinstruments@gmail.com



KI-404



KI-405



KI-406

**Bent End Eyelash Placement Tweezers**

- Hobby or Stamp tweezers work great for eyelash placement!
- One pair of stainless steel tweezers with bent ends.
- Approximately 4 inches long
- Tweezers end is wider like a paddle which allows you to grip small things such as eyelashes, stamps or other flat laying objects.
- Perfect for reborrowing, hobbies and crafts.



KI-407



KI-408



KI-409



KI-410



KI-411



**SAILOR SOLDIER**  
Surgical Compronation

E-mail: sailorinstruments@gmail.com